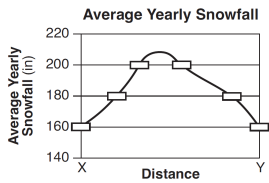


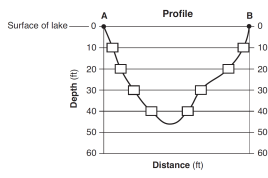
# Answer Key

## Drawing Contour lines and profiles

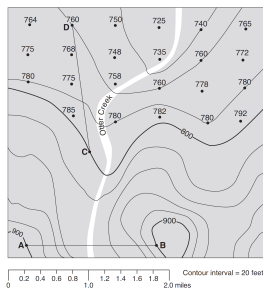
1.



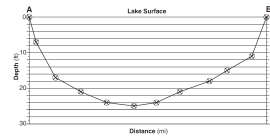
8.



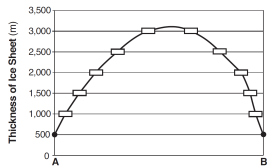
14.



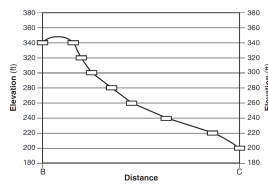
20.



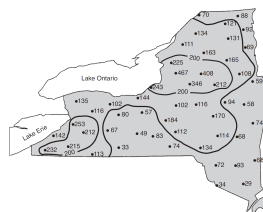
2.



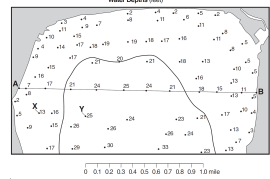
9.



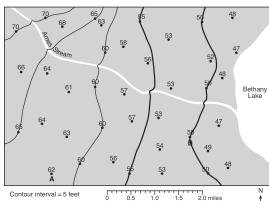
15.



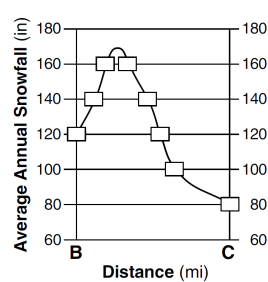
21.



3.



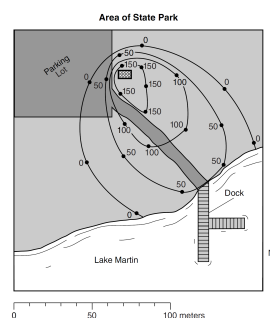
10.



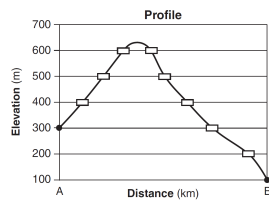
16.

A correctly drawn 25.00-inch isoline extends to the edges of the map.

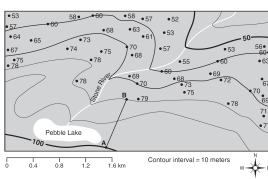
22.



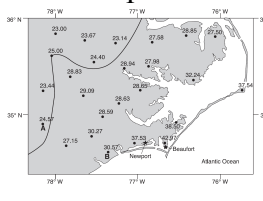
4.



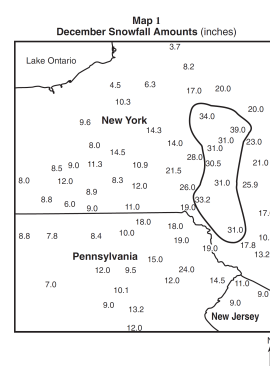
11.



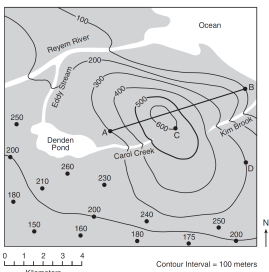
17.



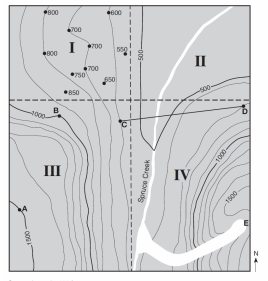
23.



5.



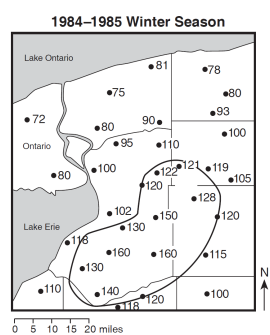
12.



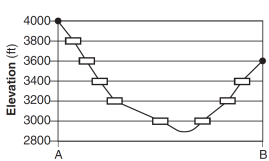
18.

If additional contour lines are drawn, all contour lines must be correct to receive credit.

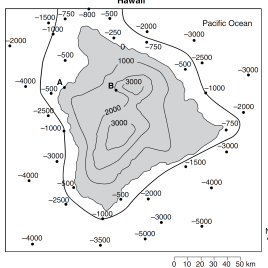
24.



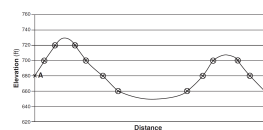
6.



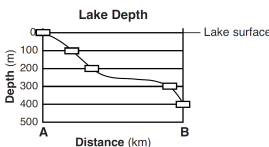
13.



19.



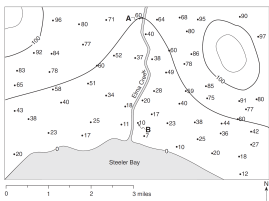
7.



# Answer Key

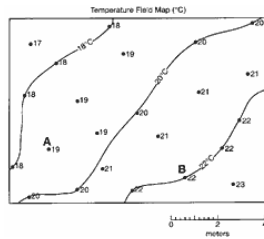
## Drawing Contour lines and profiles

25.

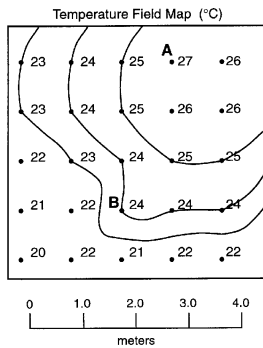


The 60-foot contour line must extend to the edges of the map. If other contour lines are drawn, all lines must be correct.

28.



26.



27. All six plots are within or touch the rectangles shown below and are connected with a line from A to B that passes within or touches the rectangles. The line must extend above 1800 ft but below 1900 ft.

