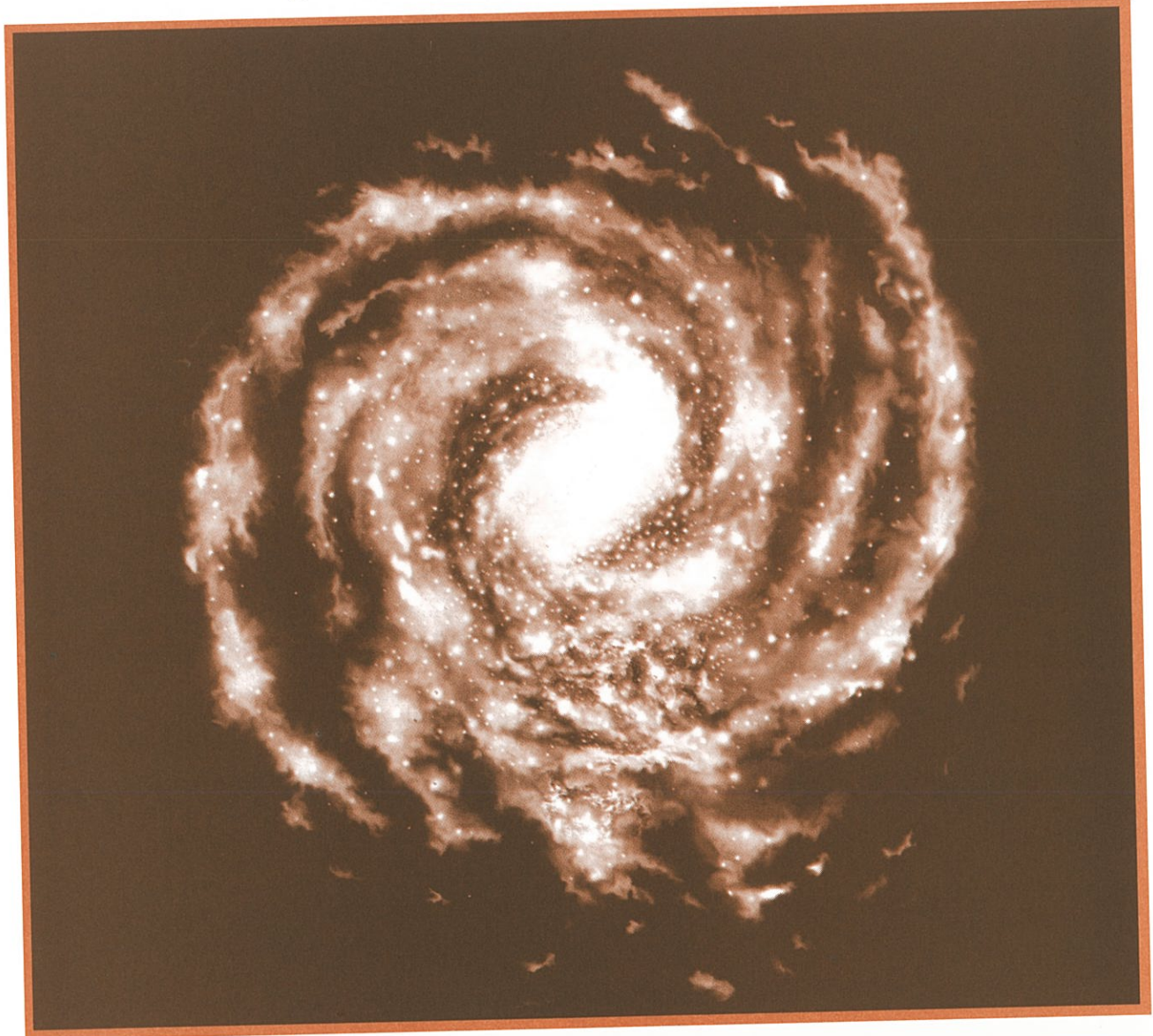


What are galaxies?



KEY TERMS

galaxy: large group of stars

spiral galaxy: galaxy with a thick center and flattened arms

elliptical galaxy: spherical or flattened disk-shaped galaxy

irregular galaxy: galaxy with no definite shape

Milky Way galaxy: the galaxy in which the sun is located

THE TYPES OF GALAXIES

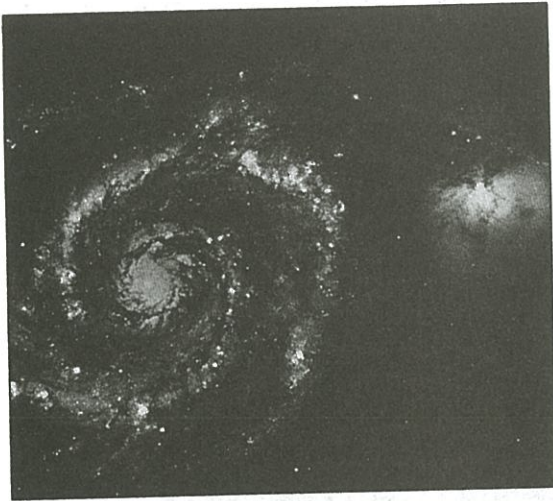


Figure A *Spiral galaxy*

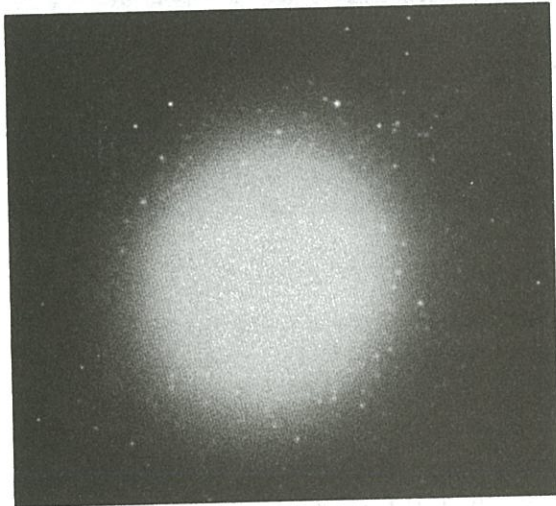


Figure B *Elliptical galaxy*



Figure C *Irregular galaxy*

Most galaxies are spiral galaxies. Our solar system is in the spiral galaxy called the Milky Way. We are one of the many stars in one of the arms of the Milky Way. We can't take a picture of the entire Milky Way, because we are inside it. However, if you go far away from city lights and look up at a very clear, very dark sky, you can see a band across the sky that glows faintly. That glow is from millions and millions of stars in the Milky Way that are too faint to see alone.

Elliptical galaxies look like a ball that has been squished. The stars in elliptical galaxies are usually older than the stars in spiral galaxies. Therefore, elliptical galaxies are usually not as bright as spiral galaxies.

Irregular galaxies are the least common type of galaxy. The stars in an irregular galaxy are not arranged evenly so irregular galaxies have no definite shape. Irregular galaxies are smaller and fainter than the other kinds of galaxies.

TRUE OR FALSE

In the space provided, write "true" if the sentence is true. Write "false" if the sentence is false.

- _____ 1. Scientists know how many stars there are in the universe.
- _____ 2. Spiral galaxies are the most common kind of galaxy.
- _____ 3. The Milky Way is an elliptical galaxy.
- _____ 4. Irregular galaxies have a definite shape.
- _____ 5. The sun is part of the Milky Way galaxy.
- _____ 6. You can see the glow of the Milky Way on a clear night.
- _____ 7. Spiral galaxies are shaped like a pinwheel.
- _____ 8. Galaxies are moving towards each other.
- _____ 9. Scientists think that the big bang created the universe.
- _____ 10. Scientists know exactly how the universe began.

MATCHING

Match each term in Column A with its description in Column B. Write the correct letter in the space provided.

- | Column A | Column B |
|------------------------------|---------------------------------|
| _____ 1. Edwin Hubble | a) our galaxy |
| _____ 2. irregular galaxies | b) studied galaxies |
| _____ 3. spiral galaxies | c) most common galaxies |
| _____ 4. elliptical galaxies | d) least common galaxies |
| _____ 5. Milky Way | e) shaped like a flattened ball |