

## What is weather?



**KEY TERM**

**weather:** day-to-day conditions of the atmosphere

# LESSON | What is weather?

## 19

We probably talk about weather more often than anything else. How often have you started talking to people by saying, “Wow, look at that rain!” or “This heat is too much!”? Weather affects us in many ways. We dress according to the weather. We make plans hoping for fair weather.

Weather is very, very important to everyone. But, what exactly is **weather**?

Weather is the day-to-day conditions of the atmosphere. It is different from place to place, and weather is always changing.

Several things make up weather. They are:

- air temperature
- air pressure
- appearance of the sky (clear or cloudy)
- wind speed
- wind direction
- humidity (amount of water in the air)
- precipitation [prih-sip-uh-TAY-shun] (rain, snow, sleet, hail)

You will learn more about weather in the next Lessons. You also will learn how to read a weather map. In fact, you will learn to make your own weather map. It’s easy — and it’s fun.

## HOW WEATHER AFFECTS US

---

Weather affects the lives and jobs of many people. For example, it affects how, or even if, we get from place to place.



Figure A



Figure B



Figure C

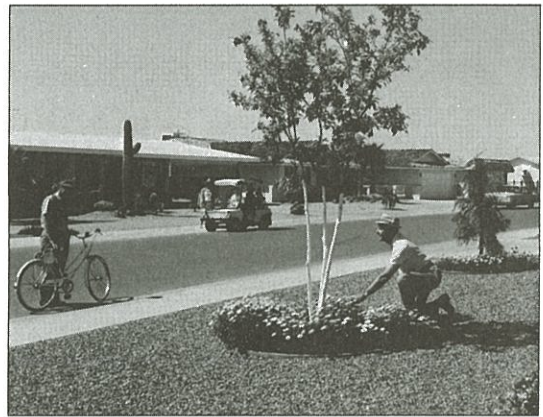


Figure D



Figure E

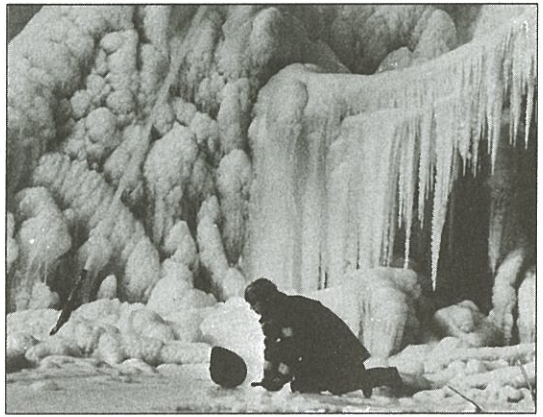


Figure F

Weather also affects how we play.



Figure G



Figure H

1. Can you think of other ways in which we are affected by the weather? \_\_\_\_\_  
\_\_\_\_\_
2. Name a kind of job that is affected by the weather. \_\_\_\_\_  
\_\_\_\_\_

### WHAT DO THE PICTURES SHOW?

Look at each picture. Each of the pictures below hints at some part of weather. On the line under each picture, write the part of weather you think it shows. Choose from the list below.

humidity  
air pressure

appearance of sky  
wind speed and direction

precipitation  
temperature



Figure I

1. \_\_\_\_\_



Figure J

2. \_\_\_\_\_



Figure K

3. \_\_\_\_\_



Figure L

4. \_\_\_\_\_

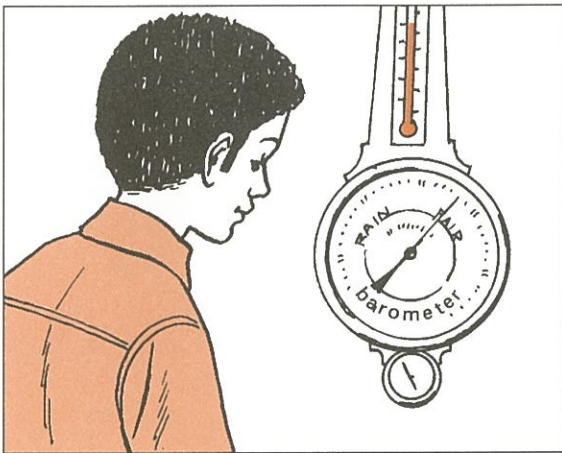


Figure M

5. \_\_\_\_\_



Figure N

6. \_\_\_\_\_

### TRUE OR FALSE

*In the space provided, write "true" if the sentence is true. Write "false" if the sentence is false.*

- \_\_\_\_\_ 1. Air pressure is part of the weather.
- \_\_\_\_\_ 2. Weather takes place in the troposphere. (Look back to Lesson 11 if you have to.)
- \_\_\_\_\_ 3. Weather is the same everywhere.
- \_\_\_\_\_ 4. Weather can change quickly.
- \_\_\_\_\_ 5. Water is always a liquid.

## FILL IN THE BLANK

---

Complete each statement using a term or terms from the list below. Write your answers in the spaces provided. Some words may be used more than once.

hot  
weighs  
wind speed  
cold

how something looks  
wind direction  
gas

water vapor  
clouds  
precipitation

1. Air pressure has to do with how much the air \_\_\_\_\_.
2. Temperature tells us how \_\_\_\_\_ or \_\_\_\_\_ the air is.
3. Rain, snow, hail, sleet, and drizzle are examples of \_\_\_\_\_.
4. Precipitation is made up of liquid or frozen \_\_\_\_\_.
5. "Appearance" means \_\_\_\_\_.
6. The appearance of the sky can be changed by \_\_\_\_\_.
7. "20 kilometers per hour" can describe \_\_\_\_\_.
8. "Northwest" can describe \_\_\_\_\_.
9. Humidity is the amount of \_\_\_\_\_ in the air.
10. Water vapor is water in the \_\_\_\_\_ form.

## REACHING OUT

---

How can the weather affect the price of food?

---

---

---



Figure O